


WELCOME TO A WORLD  
WHERE LIFE IS  
*EXTRAORDINAIRE*



7 MAHALAXMI



A nighttime aerial view of a city skyline. In the foreground, a tall, slender skyscraper is under construction, its framework visible against the dark sky. The city is illuminated with warm yellow and white lights, and a body of water is visible in the background under a cloudy night sky.

The Structure Will Rise Sky High.  
So Will Its Value.

*Come, Live Extraordinaire.*

Subodh Runwal Group is bringing to you an unparalleled investment opportunity, distinguished by its premier location, strategic connectivity, and prestigious community. With an unwavering commitment to excellence and luxurious innovation, this tower of sophistication is set to become an eminent presence in the city's southern skyline.



# Where The Name Commands Distinction And The Address

*Is Distinguished.*

A legacy of over 4 decades, built on the foundation of commitment, Subodh Runwal Group's magnificent icon at Mahalaxmi is poised to be a defining stand-out in this alluring collection.

Situated in a neighbourhood inspired by the Goddess of Wealth, and reserved for the elite few who will share their address with the city's distinguished. Nestled in a corner plot at N. M. Joshi Marg, 7 Mahalaxmi welcomes you to the good life that makes South Mumbai so desirable.



The developer makes no representations regarding the existence/continuity of the view shown herein.

Actual View



# Your Hyper-Connected *World*

Thanks to the rapid infrastructure development happening in Mahalaxmi, it's quickly becoming a neighbourhood that's hyper-connected.



## ROADS & CONNECTIVITY

▪ Eastern Express Highway	950 m
▪ Eastern Freeway	3.0 km
▪ Coastal Road	4.5 km
▪ Mahalaxmi Race Course	4.8 km
▪ Atal Setu	5.4 km
▪ Bandra Worli Sealink	6.0 km
▪ Nariman Point	8.4 km
▪ Western Express Highway	9.0 km
▪ SCLR	12.0 km
▪ BKC	14.0 km
▪ Domestic Airport	15.0 km
▪ International Airport	18.0 km

## RAIL CONNECTIVITY

▪ Chinchpokli Railway Stn.	200 m
▪ Mahalaxmi Railway Stn.	1.1 km
▪ Lower Parel Metro Stn.	1.4 km

## MALLS

▪ The Palladium	2.1 km
▪ Atria Mall	4.1 km

## HOSPITALS

▪ Wockhardt Hospital	1.5 km
▪ Reliance Hospital and RC	3.5 km
▪ Jaslok Hospital	3.5 km

## HOTELS

▪ ITC Grand Central	1.7 km
▪ Four Seasons	2.8 km
▪ St. Regis	2.8 km
▪ Taj Wellington Mews	7.9 km

## CLUBS

▪ Willingdon Sports Club	2.9 km
▪ NSCI	5.0 km
▪ Royal Western India Turf Club	6.3 km



A Skyline Experience Like No Other!



The developer makes no representations regarding the existence/continuity of the view shown herein.

Actual View



# Stunning Panoramic Views Of The City



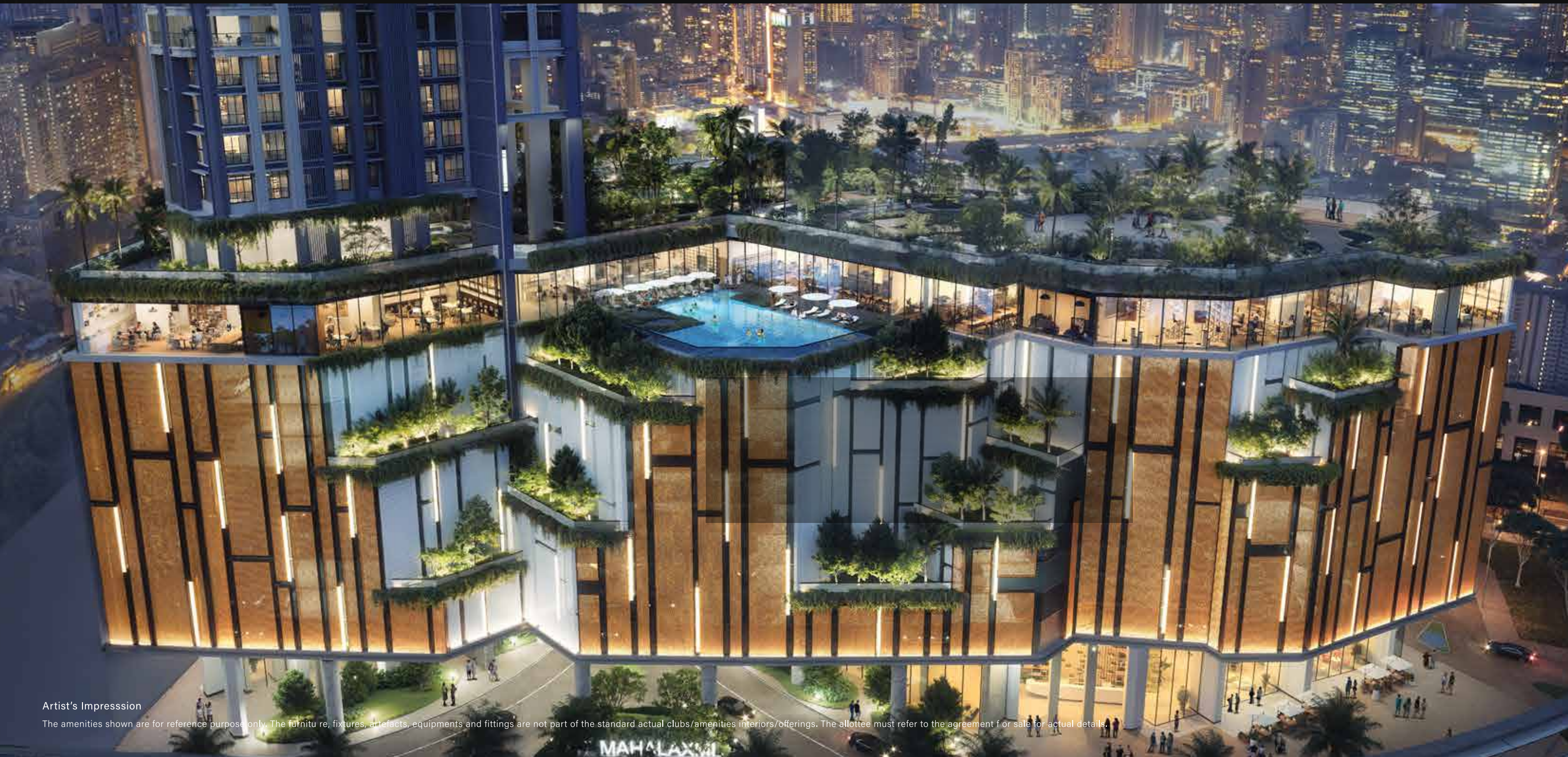
The developer makes no representations regarding the existence/continuity of the view shown herein.

Actual View



# World Class Club & *Recreational Amenities*

- A Grand Clubhouse Of Upto 65,000 Sq. Ft.
- Around 1.5 Acres Of Landscaped Areas
- Exclusive Podium Level Green E-Park with 150 M Wide Frontage
- Additional Rooftop Amenities



Artist's Impression

The amenities shown are for reference purpose only. The furniture, fixtures, artefacts, equipments and fittings are not part of the standard actual clubs/amenities interiors/offering. The allottee must refer to the agreement for sale for actual details.

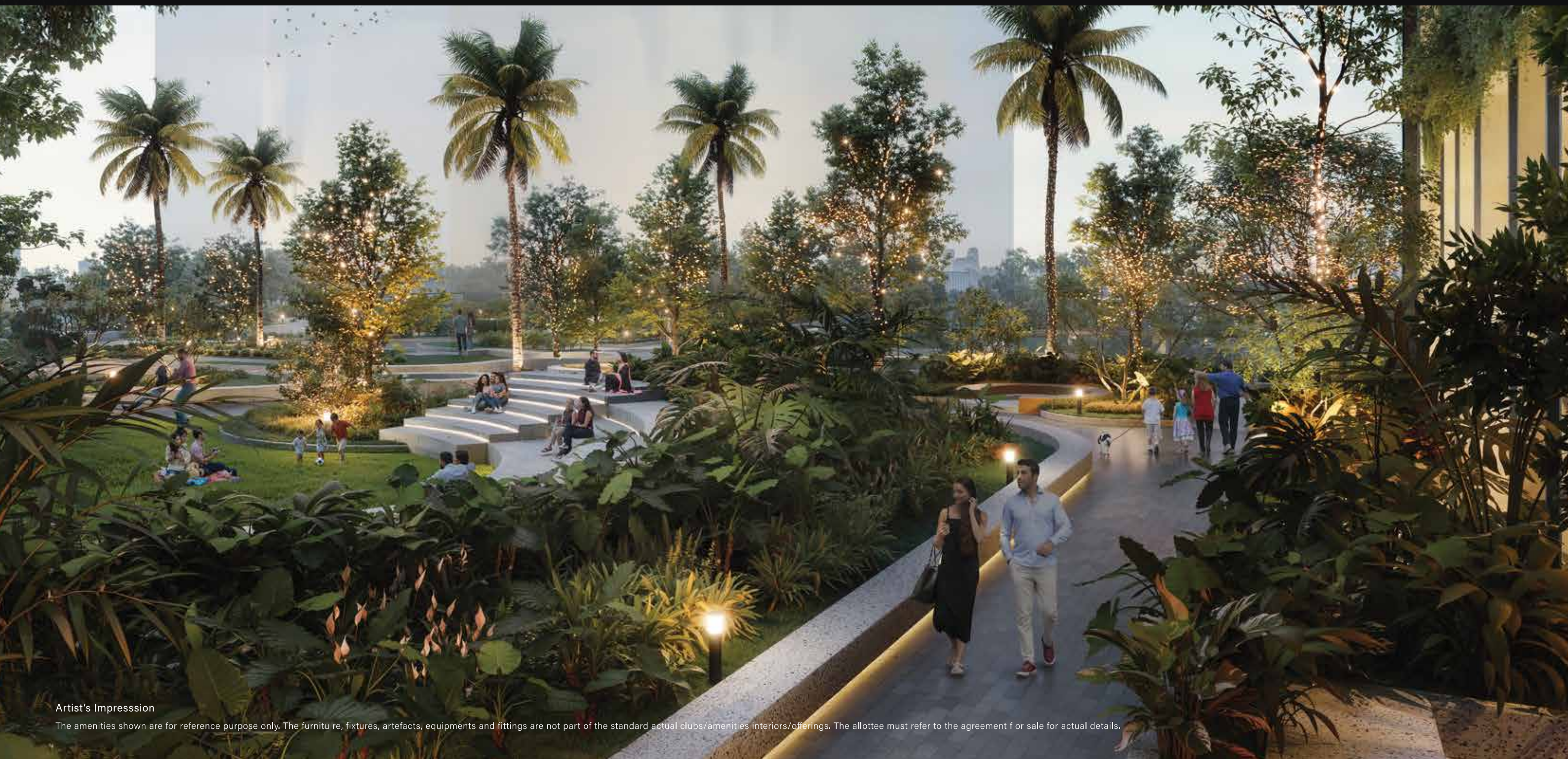
MAH LAXMI



# Where Luxury *Meets Serenity*

Indulge in a world of luxury with our meticulously curated podium landscape and upto 100 exceptional amenities.

- Multiple Swimming Pools
- Jacuzzi
- Kids' Pool
- Pool Deck
- Terrace Garden
- Banquet Lawn
- Cricket Net
- Stretching Lawn
- Mini Golf
- Pet Park
- Outdoor Gym
- Kids' Playground
- Meditation Centre
- Sunken Deck
- Yoga Deck
- Hammock
- Grand Lawn
- Amphitheatre
- Obstacle Wall
- Jogging / Walking Track
- Senior Community Zone
- Picnic Lounge Seating
- Temple



Artist's Impression

The amenities shown are for reference purpose only. The furniture, fixtures, artefacts, equipments and fittings are not part of the standard actual clubs/amenities interiors/offers. The allottee must refer to the agreement of sale for actual details.



# Where Amenities Are *Indulgences*

Gymnasium



Artist's Impression



Artist's Impression

Swimming Pool With Kids' Play Pool

At 7 Mahalaxmi, indulge in a world-class gym offering every workout you can imagine, alongside serene spas that melt away your stress. Treat yourself to daily moments of bliss and embrace the art of relaxation like never before!

The amenities shown are for reference purpose only. The furniture, fixtures, artefacts, equipments and fittings are not part of the standard actual clubs/amenities interiors/offers. The allottee must refer to the agreement for sale for actual details.





# The Podium Landscape:

## *Where Tranquility Meets Luxury*

### Mini-Theatre



Representative Image Only.

### Banquet Hall



Representative Image Only.

Artist's Impression

The amenities shown are for reference purpose only. The furniture, fixtures, artefacts, equipments and fittings are not part of the standard actual clubs/amenities interiors/offers. The allottee must refer to the agreement for sale for actual details.





Artist's Impression

# Where Stunning Views *Come To Life At The Sky Lounge*

Sky Lounge

## Party Pool

Discover a new level of luxury with our stunning rooftop amenities. The Sky Lounge, an open-air retreat, invites you to unwind with breathtaking views and a serene ambiance.

- Enjoy stunning city skyline views.
- Perfect for relaxation and gatherings.

Elevate your lifestyle in this exclusive haven your sky-high escape awaits!

The amenities shown are for reference purpose only. The furniture, fixtures, artefacts, equipments and fittings are not part of the standard actual clubs/amenities interiors/offers. The allottee must refer to the agreement for sale for actual details.



Artist's Impression





Where Every View Is Breathtaking!  
*Welcome To Your Iconic Home.*





Artist's Impression

The amenities shown are for reference purpose only. The furniture, fixtures, artefacts, equipments and fittings are not part of the standard actual clubs/amenities interiors/offers. The allottee must refer to the agreement for sale for actual details.



Artistic Impression

## Grand Drop Off With *A Touch Of Elegance!*

Designed by internationally recognized designers. This stunning gateway offers a sophisticated first impression, blending luxury with functionality.



# Where All You See Is *A Treat For Your Eyes*



Artistic Impression



Artist's Impression

The amenities shown are for reference purpose only. The furniture, fixtures, artefacts, equipments and fittings are not part of the standard actual clubs/amenities interiors/offers. The allottee must refer to the agreement for sale for actual details.

As you step indoors, the visual splendour unfolds even further. Every detail, from the fittings to the fixtures, is designed to captivate, while the intricately lined imported marble floors that radiate elegance with every step. This is a home unlike any other - crafted for those who appreciate the extraordinary.



# Where The Attention-To-Detail

*Captivates Your Senses*



11 FT. CLEAR HEIGHT  
FLOOR TO CEILING



SEA VIEWS ON  
HIGHER FLOORS



APARTMENTS  
WITH DECK



SUPERIOR FITTINGS  
& FINISHINGS



# Crafted By The *Best Project Partners*



P Landscape  
(Thailand)  
*Landscape Design*



Arch. Hafeez Contractor  
*Design Architect*  
*Winner Of Padma Bhushan*



HIRANANDANI PROJECT



IMPERIAL EDGE



23 DUBAI MARINA



Buro Happold  
(London)  
*Structural Consultant*



HBA Architecture (London)  
*Interior Design For Club Lobby,  
Amenity Spaces*



RAFFLES, MACAU



SPHERE THE LINK, DUBAI



WALDORF ASTORIA, DOHA



Mahimtura  
*Structural Consultant*



# Backed By *A Rich Legacy.*

Over the last half century, Runwal Group has not just made residential complexes, townships, malls and world-class offices, but created icons like the R City Mall in Ghatkopar and R Malls in Thane and Mulund which have grown to become marquee retail destinations.

65+  
PROJECTS

45+  
YEARS LEGACY

50+  
DELIVERED PROJECTS

35,000+  
HAPPY FAMILIES

*R MALL & R CITY*  
OUR MARQUEE RETAIL DESTINATIONS



# Our Flagship *Projects*



## Runwal Bliss, Kanjurmarg

Part of Runwal City Centre, built on the live, learn, work, play theme. These 8 towers boast of beautiful residences, landscaped open spaces and the best recreational amenities.



## Runwal Avenue, Kanjurmarg

A perfect blend of fine living, sought-after comforts, high-street delights and green open spaces. Part of Runwal City Centre, and your choicest venue for a good life.



## Runwal Forests, Kanjurmarg

A 15 acre large residential development on LBS Marg, close to Powai. Today, it's among the finest gated communities in Mumbai.



## Runwal Garden City, Dombivli

A 250+ acre masterpiece where urban vibrancy meets lush serenity. Enjoy world-class amenities, conveniences, and the fresh air of tomorrow, today.



## Runwal Pinnacle, Mulund

The finest high-rise address in the eastern suburbs of Mumbai. Get used to better views, fresher air and quieter surrounds in elegantly designed homes. Experience a life to look up to.





[www.runwalgroup.in](http://www.runwalgroup.in)

---

Site Address: 7 Mahalaxmi, Junction of Sane Guruji Marg & N.M. Joshi Marg, Mumbai 400 011.

---

Registered Address: Runwal Real Estates Private Limited, 4th Floor, Runwal and Omkar Esquare, Off Eastern Express Highway, Opp. Sion Chunabatti Signal, Sion (E), Mumbai 400 022.

---



This project has been registered via MahaRERA Registration No. PR1170002400011. Available on <http://maharera.mahaonline.gov.in>.

Disclaimer: This project is being developed in phase wise manner jointly by Runwal Real Estates Pvt. Ltd. and Shreepati Build Infra Investment Limited. The offer is valid for a limited purpose only and on select apartments and the promoter reserves the right to modify or withdraw the same. This material does not constitute an offer and/or contract of any type between the owners and the recipient. Any purchaser/allottees of this project shall be governed by the terms and conditions of the booking form and agreement for sale to be entered into between the parties and no details mentioned in this material shall in any way govern such transaction. The project may undergo variations pursuant to change in plans, permissions and approvals of relevant authorities as per the prevailing government norms. The project is financed by IndusInd Bank Limited.

